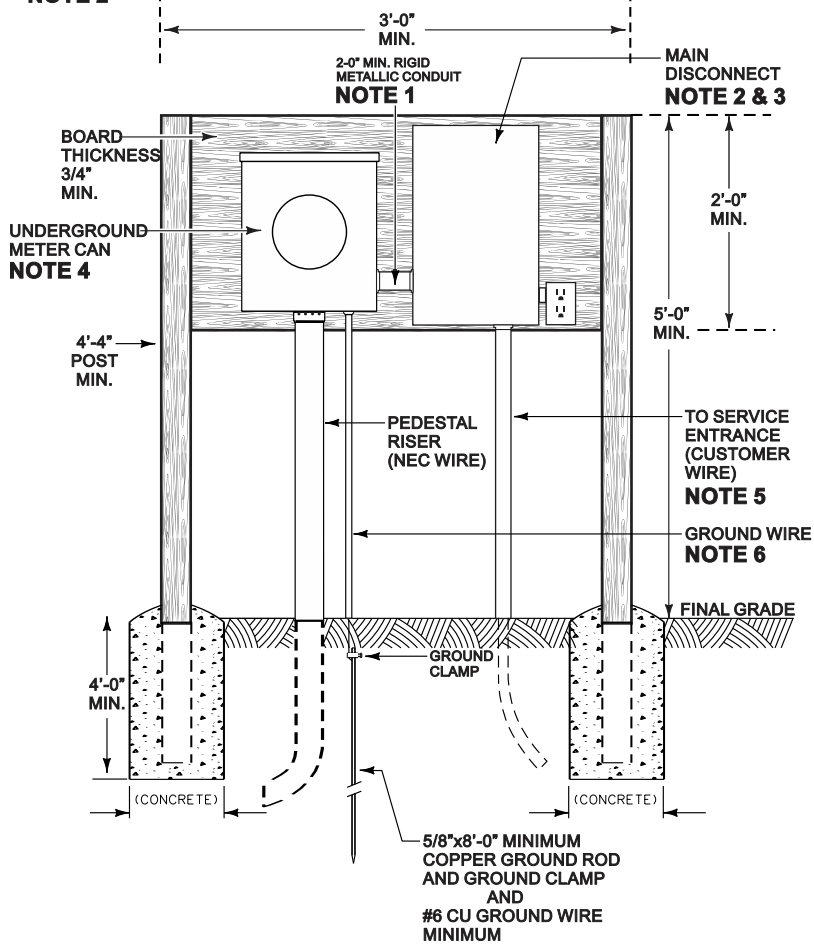


SERVICE PEDESTAL FOR UNDERGROUND

NOTE 2

TREATED WOODEN PEDESTAL



WIRE SIZES:

	COPPER	CONDUIT SIZES
100 AMP	#4	1.5"
200 AMP	2/0	2"
320 AMP	350 MCM	3"

CUSTOMER TRENCHING GUIDELINES

- * TRENCH MUST BE 4'-0" DEEP TO TOP OF CONDUIT
- * 3" PVC SCHEDULE 40 CONDUIT
- * LONG SWEEPING 90 DEGREE ELBOWS
- * 3/8" ELECTRICAL PULLING ROPE

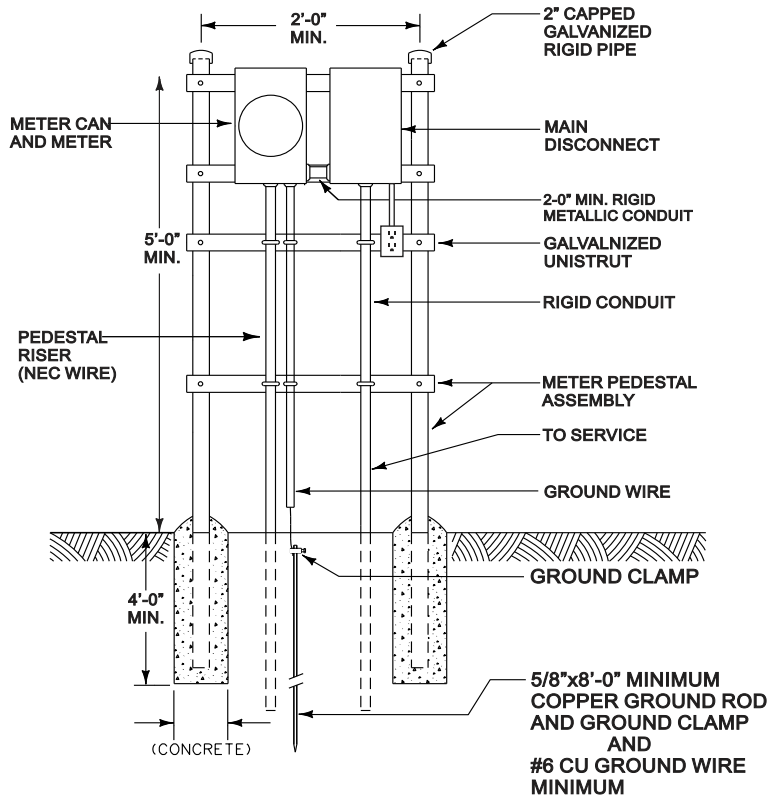
***NO EXPOSED WIRES, ALL WIRES MUST TO BE IN CONDUIT WITH ACCORDANCE TO THE NATIONAL ELECTRIC CODE**

***CALL 811 TWO BUSINESS DAYS BEFORE YOU DIG**

GENERAL CONSTRUCTION NOTES:

1. CONDUIT BETWEEN METER SOCKET AND MAIN DISCONNECT MUST BE RIGID METALLIC (ALUMINUM OR GALVANIZED). LENGTH MUST BE A MINIMUM OF 2" NOT TO EXCEED 8".
**MUST INSTALL RIGID INSULATED METALLIC GROUNDING BUSHING ON ONE END BONDED TO GROUND.
2. A MANUALLY OPERABLE SWITCH OR CIRCUIT BREAKER EQUIPPED WITH HANDLE OR SUITABLE OPERATING MEANS POSITIVELY IDENTIFIED AND MARKED FOR MECHANICAL OPERATION BY HAND. (MUST BE WEATHERPROOF)
3. FUSED SWITCH OR CIRCUIT BREAKER WITH AMP RATING NO LARGER THAN 125% OF THE METER BASE RATING. NO MORE THAN 1 CONDUCTOR PER HOT TERMINAL WILL BE ALLOWED.
4. MINIMUM 100 AMP 3 WIRE ENTRANCE AS PER NATIONAL ELECTRIC CODE. METER CAN MUST BE CONSTRUCTED SPECIFICALLY FOR UNDERGROUND SERVICE. METER CAN MUST BE ON LEFT SIDE OF MAIN DISCONNECT. (PREFERRED RINGLESS, LEVER BYPASS METER SOCKET / NO DOUBLE LUGGING ALLOWED)
5. WIRES FROM THE MAIN DISCONNECT TO THE TRAILER, HOUSE, WATER WELL, BARN, OR BUILDING MUST BE INSTALLED AND TERMINATED PRIOR TO NEC SETTING A METER. (RV OUTLET/RECEPTACLE MUST BE INSTALLED PRIOR TO METER SET)
6. THE GROUND WIRE SHALL BE NO SMALLER THAN #6 COPPER AND SHALL BE PLACED INSIDE A 1/2" PVC ELECTRICAL GRADE CONDUIT.

GALVANIZED UNISTRUT PEDESTAL



X _____

DATE _____

DRAWN BY: Andrew V.
APPROVED BY: Lawrence R.



Nueces Electric Cooperative
A Touchstone Energy® Cooperative